

SAFETY IMPROVEMENTS ON NEW JERSEY AVENUE NW

DC CONTRACT NO. DCKA-2018-C-0017

FAP No.: CM-2017(042)

CONSTRUCTION MANAGER'S WEEKLY PROGRESS REPORT 20

09/22/2019 – 09/28/2019

Project Website: www.newjerseyaverehab.com



09/26/2019 - Compaction to Aggregate Base Course placed at East side of NJ Ave. b/n K & I St. NW.

1. EXECUTIVE SUMMARY

Project Description:

Work under this contract consists of safety/streetscape improvements along New Jersey Avenue, NW from N Street NW to H Street NW and the reconstruction New York Avenue, NW from First Street NW to 4th Street NW. The work includes but is not limited to the following items: Installation of new curb, gutter, and sidewalk; Installation of full depth pavement, Pavement resurfacing; Installation of utilities; Installation of flexible pavement; Installation of street light poles; Installation of traffic signals; Installation of signing and pavement markings; Installation of electrical duct bank; Relocation of over-height detection system; Installation of wireless vehicle detection system; Installation of landscape improvements; Installation of erosion and sediment control; Implementation of transportation management plan; Mobilization and demobilization, provision and maintenance of work and storage areas, Engineer's field facilities and performance of employee training; Removal and disposal of any material as a result of the activities listed above, unless stated otherwise in the contract drawings.

This project is 83.15% Federally Funded and 16.85% District-Funded. DDOT selected Capitol Paving of DC, Inc. (CPDC) as the contractor and awarded the \$12,055,691.00 contract on January 9, 2019. DDOT issued notice to proceed with contract work to CPDC with work to begin on 05/13/2019 and a substantial completion date of 11/23/2020.

2. STATUS OF CONSTRUCTION / PROGRESS SUMMARY

The following were some of the work items performed during this reporting week period.

- Reset two (2) Sewer-Water Manhole at SE Corner of NJ Ave. and K St. Approximately from Sta. 117+50 to Sta. 118+00 EB.
- Performed 11.35 SY of hard surface pavement excavation at SE Corner of NJ Ave. & K St. approx. Sta. from 117+50 to Sta. 118+00
- Performed 15.62 CY of hard surface pavement excavation at East side of NJ Ave. NW between K & L St. NW.
- Placed/used 5.59 CY of Aggregate Base Course at SE Corner of NJ Ave. & K St. approx. Sta. from 117+50 to Sta. 118+00.
- Installed 134 LF of 1' wide brick gutter at East side of NJ Ave. NW between Sta. 115+00 and 115+34.
- Performed 150 LF of 1' wide brick gutter at East side of NJ Ave. between Sta. 115+00 to 113+00.
- Installed 134 LF of 1' wide brick gutter at East side of NJ Ave. NW between Sta. 115+00 and 115+34.
- Performed 42.36 CY of Trench Excavation and backfill at Morgan St. and NJ Ave. M St. between NY Ave. and NJ Ave., and 3rd St. between M St. and NY Ave.
- Constructed 10" thick 42.69 CY of PCC Base at the bump out on NJ Ave between I St and K St NW.

3. PHOTOS OF WORK PERFORMED THIS PERIOD

Picture No. 1



09/23/2019- Setting Granite Curb at East side of NJ Ave. NW between K & L St. NW (South View)

Picture No. 2



09/23/2019 – Excavation for Structure P placement at East side of NJ, north of L St. NW. (North View)

Picture No. 3



09/24/2019- Brick sidewalk construction at SE Corner of New Jersey Ave. & K St. NW. (West View)

Picture No. 4



09/24/2019 – Concrete pouring for Wheelchair/Bicycle Ramp at SE corner of NJ & L St. NW. (East View)

Picture No. 5



09/25/2019 – Wheelchair/Bicycle Ramp Constructed at SE Corner of NJ and L St. NW. (East View)

Picture No. 6



09/26/2019 – Compaction to the subgrade at East side of NJ Ave. between K & I St. NW. (North View)

Picture No. 7



09/26/2019- Excavation to install PCC base at East side NJ Ave. b/n K & I St. NW.(NW view)

Picture No. 8



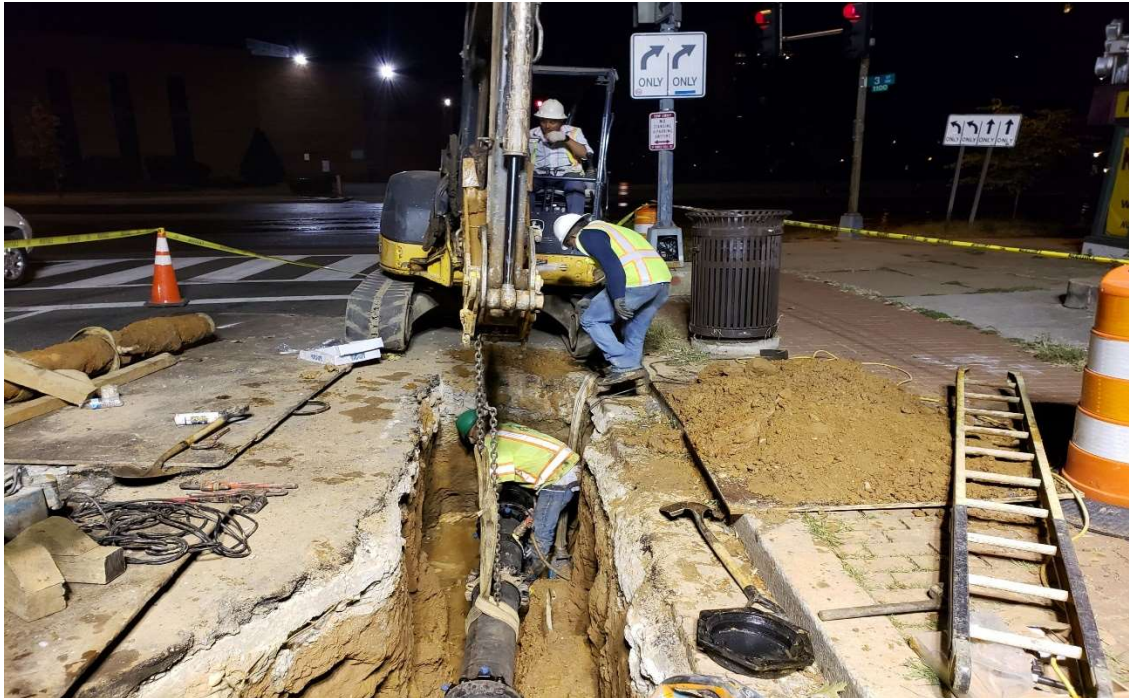
09/26/2019- Setting granite curb at NE corner of NJ Ave. & K St. NW. (North View)

Picture No. 9



09/26/2019- Brick gutter construction at East side of NJ Ave. NW between K & I St. NW. (North View)

Picture No. 10



09/26/2019- Installing 8" DIP water main at 3rd & M St. NW. (Night Activity)