

SAFETY IMPROVEMENTS ON NEW JERSEY AVENUE NW

DC CONTRACT NO. DCKA-2018-C-0017

FAP No.: CM-2017(042)

CONSTRUCTION MANAGER'S WEEKLY PROGRESS REPORT 18

09/08/2019 – 09/14/2019

Project Website: www.newjerseyaverehab.com



09/10/2019 –Installing Granite curb along East side of NJ between K & I St. NW. (South View)

1. EXECUTIVE SUMMARY

Project Description:

Work under this contract consists of safety/streetscape improvements along New Jersey Avenue, NW from N Street NW to H Street NW and the reconstruction New York Avenue, NW from First Street NW to 4th Street NW. The work includes but is not limited to the following items: Installation of new curb, gutter, and sidewalk; Installation of full depth pavement, Pavement resurfacing; Installation of utilities; Installation of flexible pavement; Installation of street light poles; Installation of traffic signals; Installation of signing and pavement markings; Installation of electrical duct bank; Relocation of over-height detection system; Installation of wireless vehicle detection system; Installation of landscape improvements; Installation of erosion and sediment control; Implementation of transportation management plan; Mobilization and demobilization, provision and maintenance of work and storage areas, Engineer's field facilities and performance of employee training; Removal and disposal of any material as a result of the activities listed above, unless stated otherwise in the contract drawings.

This project is 83.15% Federally Funded and 16.85% District-Funded. DDOT selected Capitol Paving of DC, Inc. (CPDC) as the contractor and awarded the \$12,055,691.00 contract on January 9, 2019. DDOT issued notice to proceed with contract work to CPDC with work to begin on 05/13/2019 and a substantial completion date of 11/23/2020.

2. STATUS OF CONSTRUCTION / PROGRESS SUMMARY

The following were some of the work items performed during this reporting week period.

- Installed fifteen (15) LF of Class III 15" PCC Pipe from MH-Q2 to existing pipe.
- Constructed 72 SY of Brick sidewalk on sand/cement bed on NJ Ave NW from approx. Sta. 121+80 to 122+40.
- Furnished and installed two (2) PCC Foundation For Traffic Sig/Pendant Post at NE corner of NJ Ave. and I St. NW
- Furnished and installed one (1) PCC Foundation for Controller Cabinet at NE corner of NJ Ave. and I St.
- Placed/compacted 1.73 Tons of Temporary Asphalt for roadway restoration between Structures U2 and U1.
- Installed one piece of Double catch basin at NJ Ave NW at Structure Q2.
- Installed 32 LF of Class III 18" PCC Pipe from MH-U3 to U2.
- Furnished and installed 140 LF of 8"x12" granite straight curb at NJ Ave. NW from approx. Sta. 119+50 to 120+90 and
- Performed 5.65 CY of Hard surface excavation at NE corner of NJ Ave. & I St. NW
- Installed 26.50 LF of 15" PCC storm water pipe at NJ Ave. NW between Structure Q1 & Q2.
- Continued constructing base courses for brick sidewalk at East side of NJ Ave. NW Approximately from Sta.121+00 to Sta.121+50.

3. PHOTOS OF WORK PERFORMED THIS PERIOD

Picture No. 1



09/09/2019- Filling GAB around Structure Q2 at NJ Av e. NW between L & K St. NW (West View)

Picture No. 2



09/09/2019 – Brick gutter construction at NE corner of NJ & I St. NW (NE view)

Picture No. 3



09/10/2019- Backfill to PCC connect pipe around structure Q2 (West View)

Picture No. 4



09/11/2019 – Compaction to Temporary Asphalt Placed along the edge of brick gutter at NE corner of NJ & I St. NW. (South View)

Picture No. 5



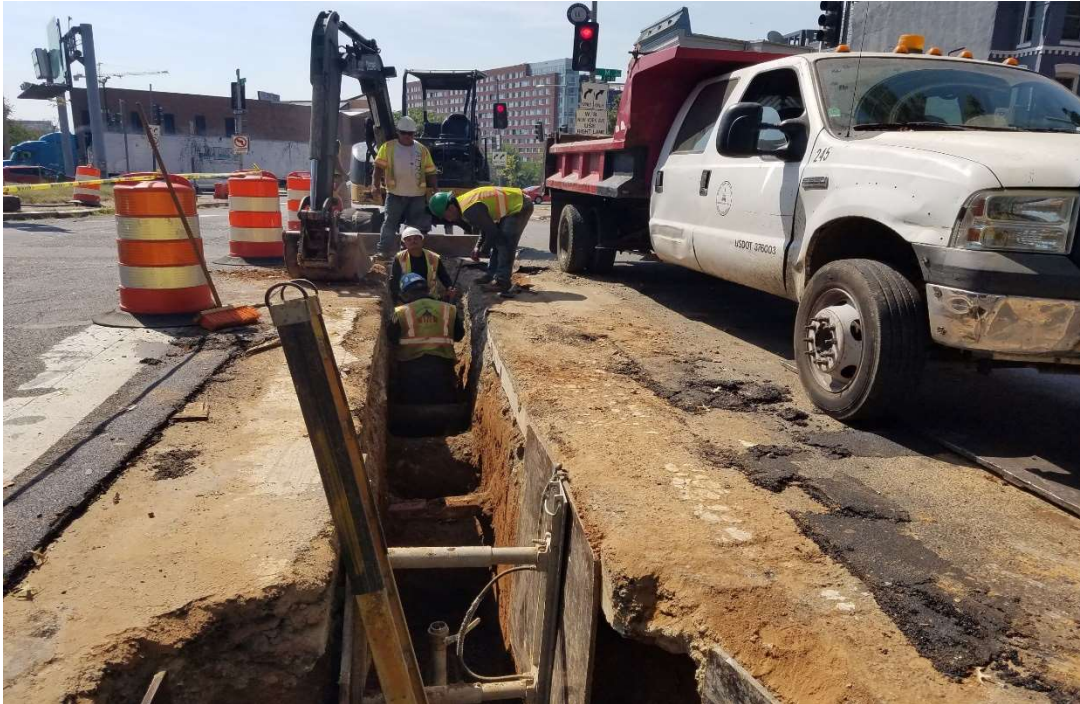
09/11/2019 – Excavation to install triple catch basin S1 at SE corner of NJ & K St. NW. (South View)

Picture No. 6



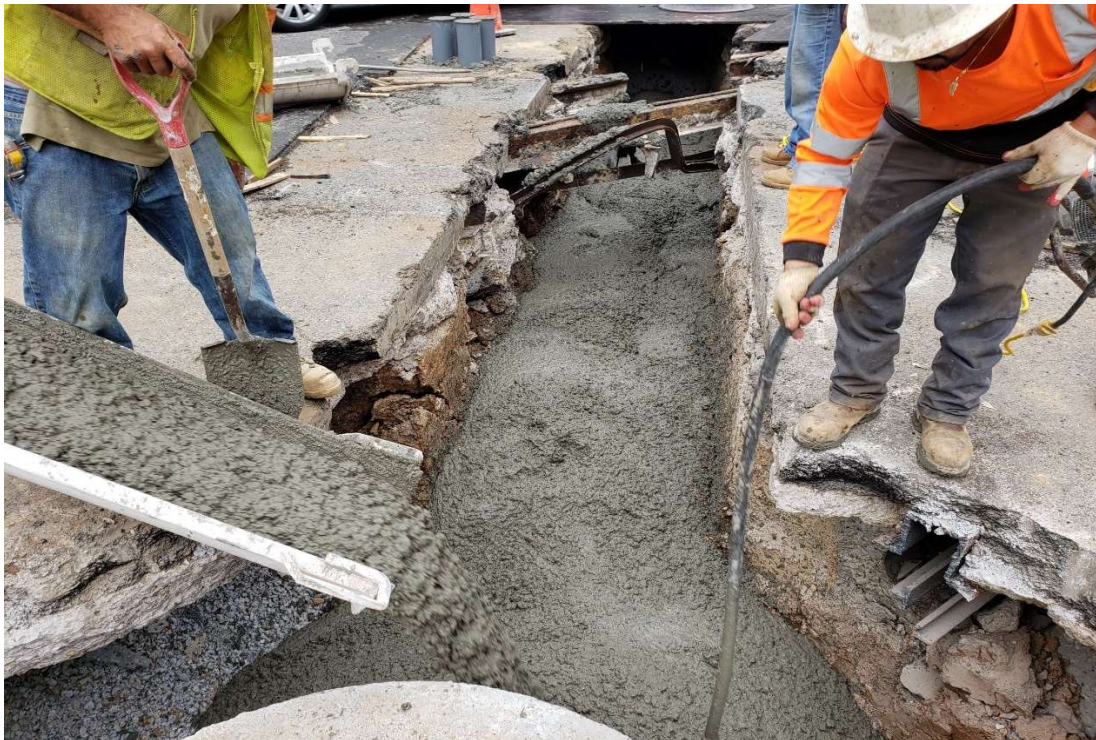
09/12/2019 – New Triple Catch Basin Installed at SE Corner of NJ Ave. & K St. NW (South View)

Picture No. 7



09/12/2019 – Trench Excavation at 3rd & M St. NW, detecting problems causing water test to fail (S. View)

Picture No. 8



09/12/2019- Concrete Pouring for PCC connect pipe encasement between MHQ2 & MH21

Picture No. 9



09/14/2019- Trench backfill/compaction for PCC Connect Pipe between the existing MH and Triple Catch Basin S1.

Picture No. 10



09/14/2019- Trench backfill/compaction for PCC Connect Pipe between the existing MH and Triple Catch Basin S1.