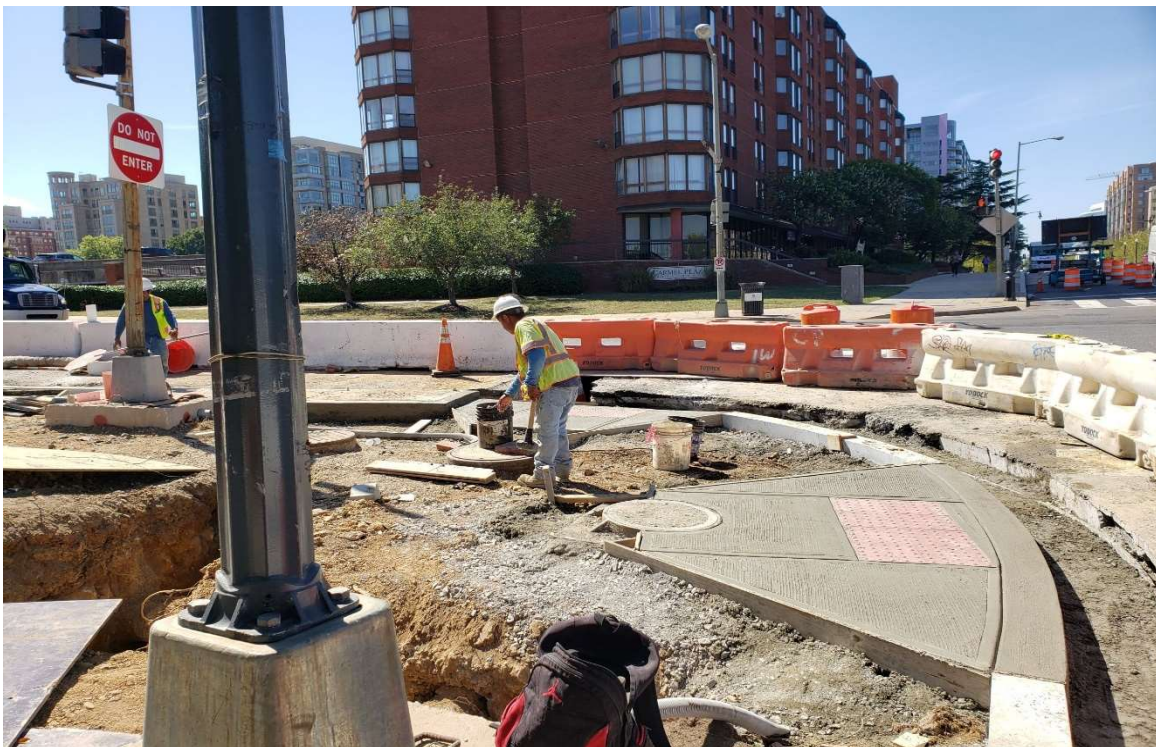


**SAFETY IMPROVEMENTS ON NEW JERSEY AVENUE NW**  
**DC CONTRACT NO. DCKA-2018-C-0017**  
**FAP No.: CM-2017(042)**

**CONSTRUCTION MANAGER'S**  
**WEEKLY PROGRESS REPORT 19**

**09/15/2019 – 09/21/2019**

Project Website: [www.newjerseyaverehab.com](http://www.newjerseyaverehab.com)



09/19/2019 – Wheelchair Ramp Constructed at SE Corner of NJ Ave. & K St. NW. (West View)

## 1. EXECUTIVE SUMMARY

### Project Description:

Work under this contract consists of safety/streetscape improvements along New Jersey Avenue, NW from N Street NW to H Street NW and the reconstruction New York Avenue, NW from First Street NW to 4th Street NW. The work includes but is not limited to the following items: Installation of new curb, gutter, and sidewalk; Installation of full depth pavement, Pavement resurfacing; Installation of utilities; Installation of flexible pavement; Installation of street light poles; Installation of traffic signals; Installation of signing and pavement markings; Installation of electrical duct bank; Relocation of over-height detection system; Installation of wireless vehicle detection system; Installation of landscape improvements; Installation of erosion and sediment control; Implementation of transportation management plan; Mobilization and demobilization, provision and maintenance of work and storage areas, Engineer's field facilities and performance of employee training; Removal and disposal of any material as a result of the activities listed above, unless stated otherwise in the contract drawings.

This project is 83.15% Federally Funded and 16.85% District-Funded. DDOT selected Capitol Paving of DC, Inc. (CPDC) as the contractor and awarded the \$12,055,691.00 contract on January 9, 2019. DDOT issued notice to proceed with contract work to CPDC with work to begin on 05/13/2019 and a substantial completion date of 11/23/2020.

## 2. STATUS OF CONSTRUCTION / PROGRESS SUMMARY

The following were some of the work items performed during this reporting week period.

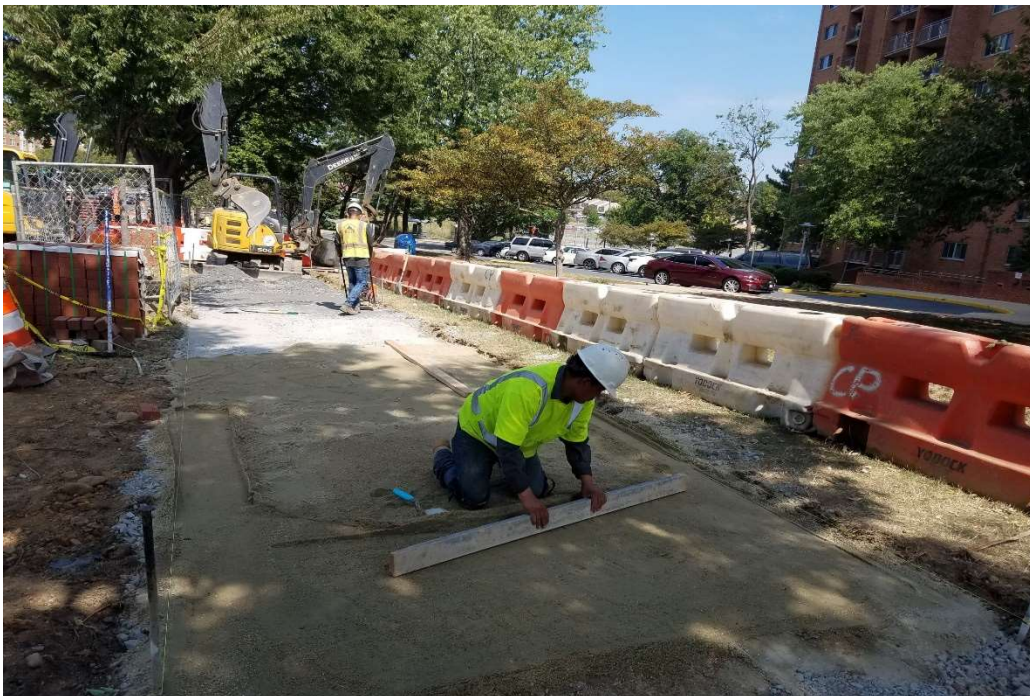
- Performed 22.52 CY of hard surface pavement excavation at East side of NJ Ave. NW between approx. Sta. 119+50 and Sta. 121+50.
- Placed/used 7.79 CY of Aggregate Base Course at East side of NJ Ave. between approx. Sta. 119+50 and 121+50.
- Furnish and Install 35 LF of six 4" Schedule 40 Rigid PVC Conduit duct bank at NJ Ave NW between MH14 & MH13.
- Furnished and Set 8" x 12" granite straight curb at East side of NJ Ave. b/n K St. & I St. approx. Station from 117+70 & 118+35.
- Replace one (1) Existing Basin with Double Basin at NJ Ave. NW, Structure Q3
- Constructed 56.72 SY of Brick sidewalk on sand/cement bed at East side of NJ Ave. NW from Approx. Sta. 114+00 to 116+00.
- Performed 50.87 SY of hard surface pavement excavation at East side of NJ Ave. NW between approx. Sta. 114+00 and Sta. 116+00.
- Placed/used 19.69 CY of Aggregate Base Course at East side of NJ Ave. between approx. Sta. 114+00 and 116+00.
- Installed 11 LF of 15" RC Connect pipe between Structure Q3 and Existing MH.
- Furnished and installed two 4'x4'x4' Manholes for Manhole A & B.
- Used/placed 264 LF of Portable Precast PCC Barrier at North Bound of NJ Ave. between K & L St. NW.

**3. PHOTOS OF WORK PERFORMED THIS PERIOD**

Picture No. 1



09/16/2019- Brick Sidewalk Construction at East side of NJ Ave. NW b/n K & I St. NW (South View)  
Picture No. 2



09/16/2019 – Checking grade for Brick sidewalk base at NJ Ave NW East Side between K & I St. NW

Picture No. 3



09/17/2019- Samples of Block sidewalk to check similarity with the existing one at East Side of NJ Ave NW, North of L St. (East View)

Picture No. 4



09/17/2019 – Grade checking for section of sidewalk needs flexi pave at NJ Ave. NW b/n K & I St. NW

Picture No. 5



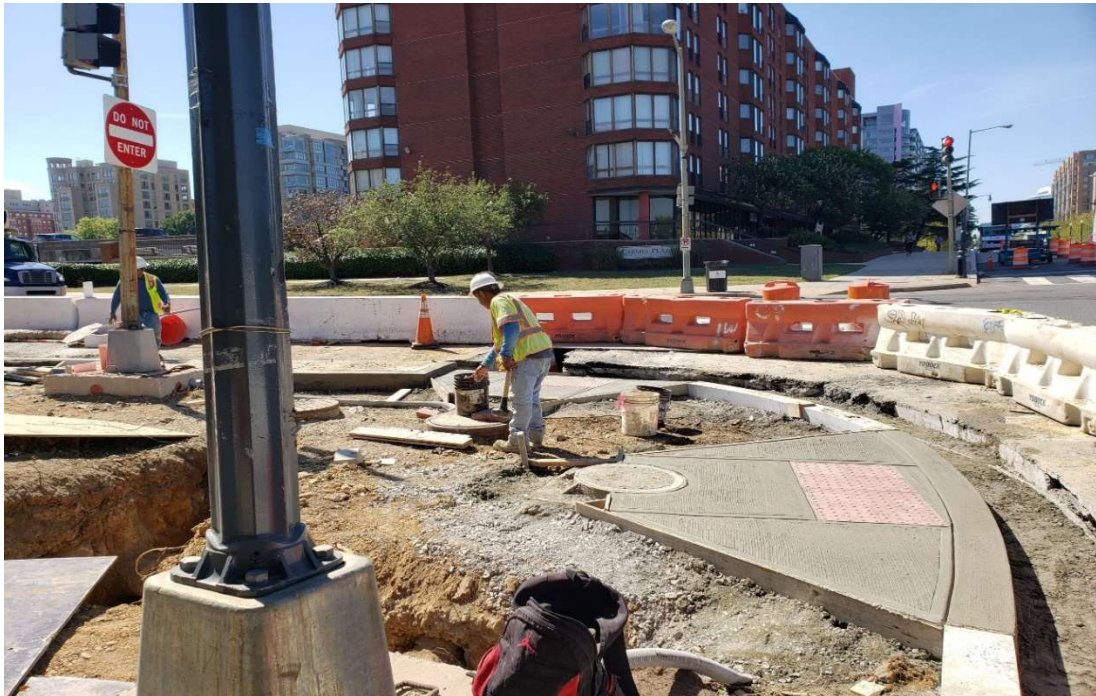
09/18/2019 – Surveying activity at/near New York & NJ Intersection, North of New York (North View)

Picture No. 6



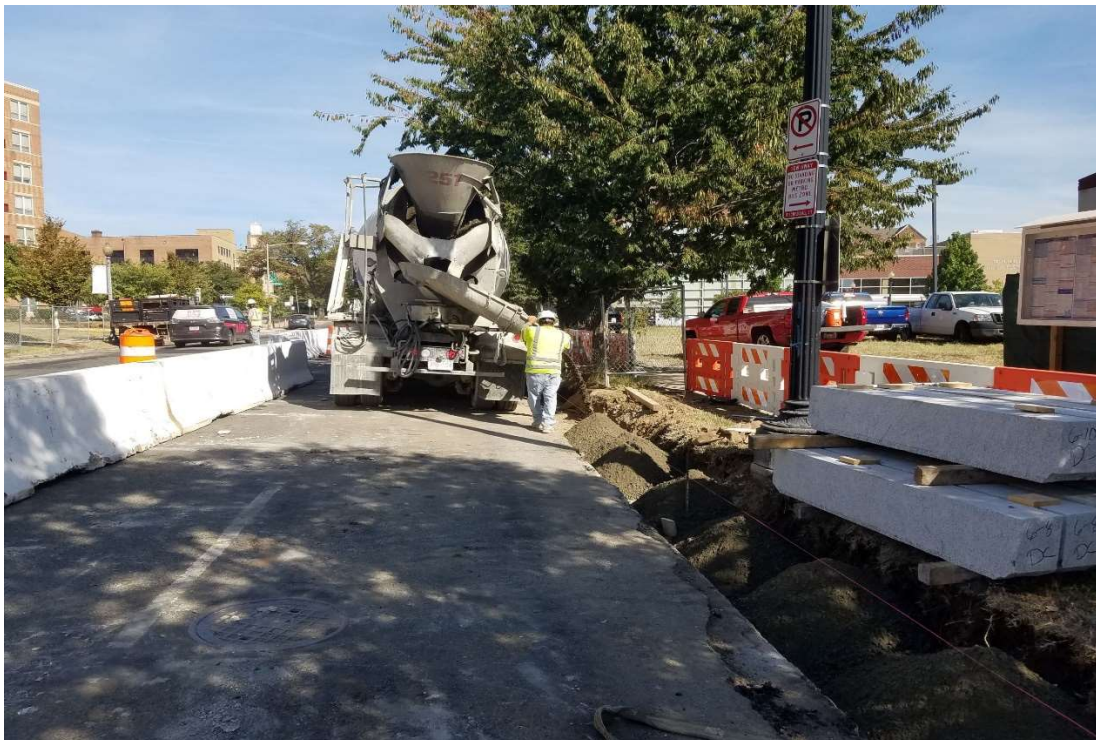
09/18/2019 – Excavation to install Wheelchair/Bicycle Ramp at SE corner of NJ & K St. NW (East View)

Picture No. 7



09/18/2019- Wheelchair/Bicycle Ramp Constructed at SE Corner of K & NJ Ave. NW. ( West View)

Picture No. 8



09/20/2019- Dry concrete mix for curb/gutter at East side of NJ Ave. b/n K & L St. NW (North View)

Picture No. 9



09/20/2019- CPDC modifying the catch basin Q3 at NE corner of NJ & K St. NW. (East view)

Picture No. 10



09/20/2019- Granite Straight curb and brick gutter installed at East side of NJ between K & I St. NW.