

SAFETY IMPROVEMENTS ON NEW JERSEY AVENUE NW

DC CONTRACT NO. DCKA-2018-C-0017

FAP No.: CM-2017(042)

CONSTRUCTION MANAGER'S WEEKLY PROGRESS REPORT 16

08/25/2019 – 08/31/2019

Project Website: www.newjerseyaverehab.com



08/27/2019 –Constructing PCC Wheelchair Ramp at SE corner of NJ Ave. & I St. NW. (North view)

1. EXECUTIVE SUMMARY

Project Description:

Work under this contract consists of safety/streetscape improvements along New Jersey Avenue, NW from N Street NW to H Street NW and the reconstruction New York Avenue, NW from First Street NW to 4th Street NW. The work includes but is not limited to the following items: Installation of new curb, gutter, and sidewalk; Installation of full depth pavement, Pavement resurfacing; Installation of utilities; Installation of flexible pavement; Installation of street light poles; Installation of traffic signals; Installation of signing and pavement markings; Installation of electrical duct bank; Relocation of over-height detection system; Installation of wireless vehicle detection system; Installation of landscape improvements; Installation of erosion and sediment control; Implementation of transportation management plan; Mobilization and demobilization, provision and maintenance of work and storage areas, Engineer's field facilities and performance of employee training; Removal and disposal of any material as a result of the activities listed above, unless stated otherwise in the contract drawings.

This project is 83.15% Federally Funded and 16.85% District-Funded. DDOT selected Capitol Paving of DC, Inc. (CPDC) as the contractor and awarded the \$12,055,691.00 contract on January 9, 2019. DDOT issued notice to proceed with contract work to CPDC with work to begin on 05/13/2019 and a substantial completion date of 11/23/2020.

2. STATUS OF CONSTRUCTION / PROGRESS SUMMARY

The following works were performed during this reporting week period.

- Furnished and installed 140 LF six (6) 4" PVC conduit for duct bank at NJ Ave. NW between MH-8 & MH-9
- Replaced/constructed one (1) Wheelchair/Bicycle Ramp at NE corner of NJ Ave. and H St. NW.
- Installed/used 190 LF of Portable Precast PCC Barrier at NJ Ave. NW between Sta. 118+00 to 121+00.
- Replaced/Constructed two (2) Wheelchair/Bicycle Ramps at SE Corner of NJ Ave. & I St. NW.
- Performed 13.89 CY of hard surface pavement excavation at NJ Ave. NW between Sewer structure U5 & existing MH
- Installed one (1) 10VLF of 48" and Less Dia Sewer Manhole for U5 at NJ Ave. & K St. NW.
- Installed one (1) 6 LF of 18" Dia Basin connect PCC Pipe Class III at NJ Ave. & K St. NW.
- Furnished and installed 33 LF of six (6) 4" Schedule 40 Rigid PVC Conduit (Duct bank) at NJ Ave. & L St. NW, between MH17 & MH8
- Performed 4.22 CY of hard surface excavation to remove old curb & gutter and base at NE corner of NJ & H St. NW from Sta. 120+60 to Sta. 121+00.
- Furnished and installed 75 LF six (6) 4" PVC conduit for duct bank at NJ Ave. NW between MH-8 & MH-9 (55LF), and between MH-8 & L22 (40LF).

3. PHOTOS OF WORK PERFORMED THIS PERIOD

Picture No. 1



08/26/2019- PCC Base for gutter at East side of NJ between H and I St. NW. (North View)

Picture No. 2



08/26/2019 – Trench excavation for Street light conduit between K & L St. NW. (North view)

Picture No. 3



08/28/2019- Installed PVC conduit for duct bank at NJ Ave. NW between K & L St. NW. (North View)

Picture No. 4



08/30/2019 – Backfill/compaction for duct bank at NJ Ave. NW between K & L St. NW. (NE view)

Picture No. 5



08/27/2019 – Constructing PCC Wheelchair Ramp at SE corner of NJ & I St. NW. (North View)

Picture No. 6



08/27/2019 – Installing granite curb at SE corner of NJ Ave. & I St NW. (West view)

Picture No. 7



08/29/2019 – Curing compound application to the newly constructed PCC Wheelchair Ramp at NE corner of NJ Ave. & H St. NW. (East View)

Picture No. 8



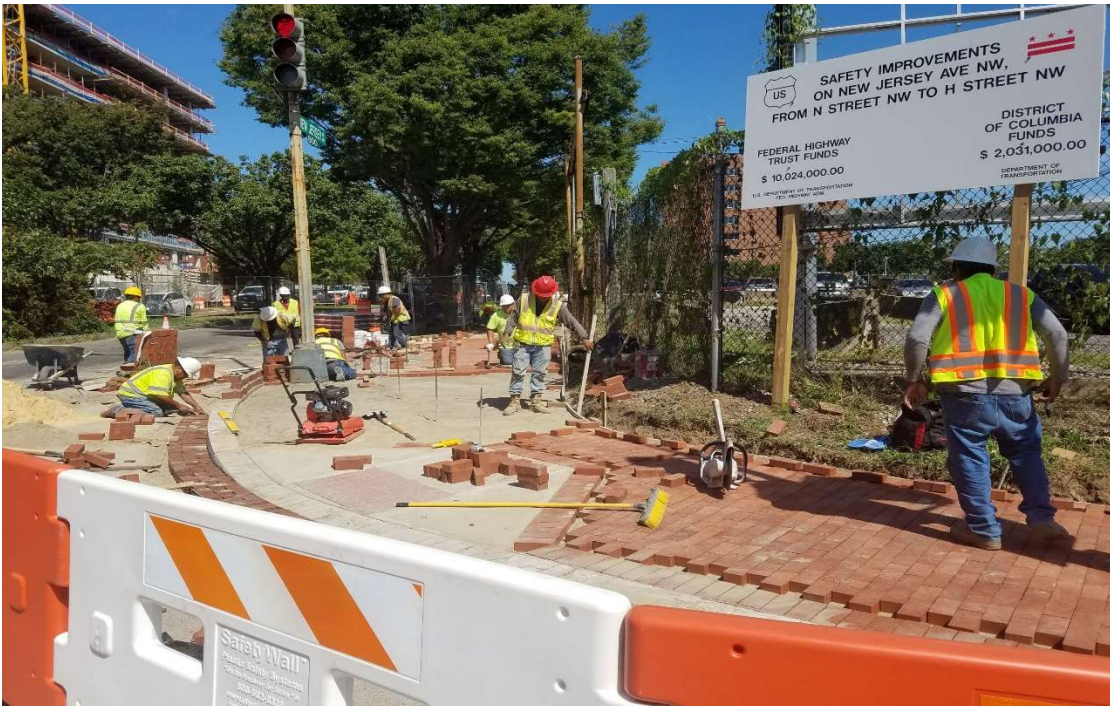
08/29/2019 - Removal of Bike station at NJ Ave. NW between K & L St. NW (East View)

Picture No. 9



08/29/2019 - MOT set up at New Jersey Ave. NW between K & L.St NW (North View)

Picture No. 10



08/30/2019 – Brick sidewalk construction at NE corner of NJ & H St. NW. (North View)