

## SAFETY IMPROVEMENTS ON NEW JERSEY AVENUE NW

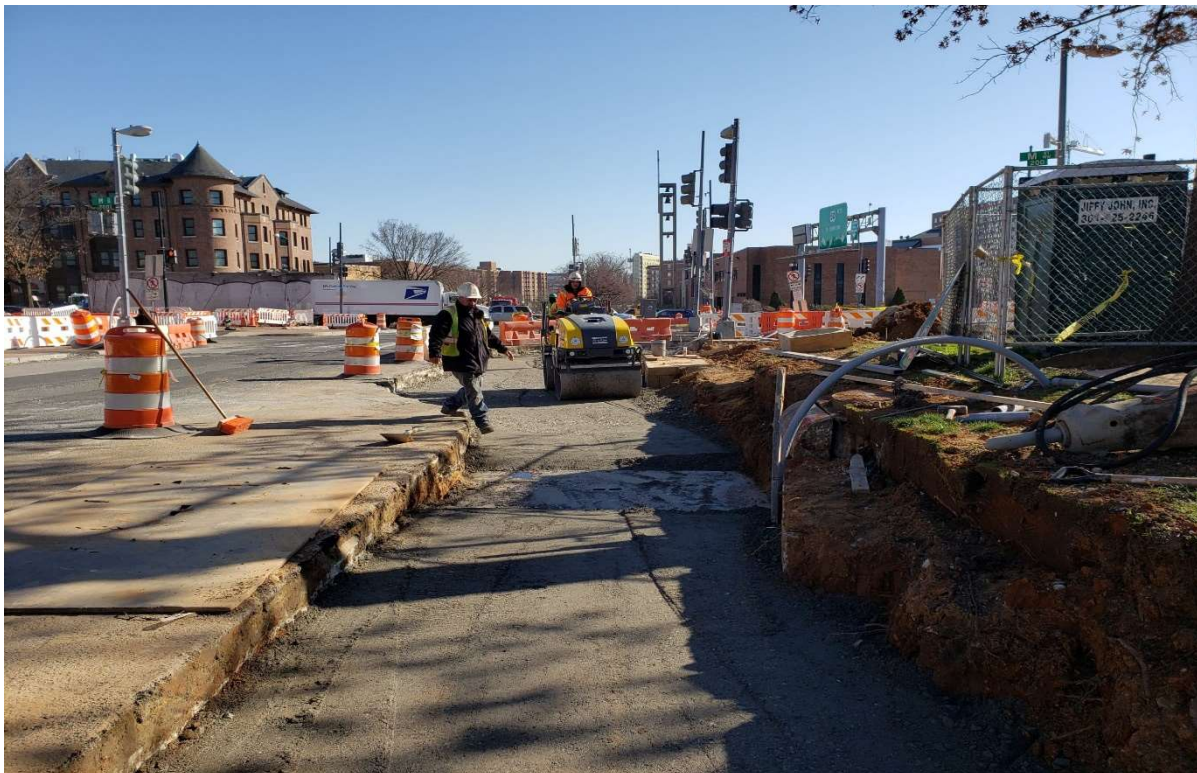
DC CONTRACT NO. DCKA-2018-C-0017

FAP No.: CM-2017(042)

# CONSTRUCTION MANAGER'S WEEKLY PROGRESS REPORT 41

**02/16/2020 – 02/22/2020**

Project Website: [www.newjerseyaverehab.com](http://www.newjerseyaverehab.com)



02/21/2020 – Aggregate Base construction at west side of New Jersey Ave. b/n Morgan & M St. (N view.)

## 1. EXECUTIVE SUMMARY

### Project Description:

Work under this contract consists of safety/streetscape improvements along New Jersey Avenue, NW from N Street NW to H Street NW and the reconstruction New York Avenue, NW from First Street NW to 4th Street NW. The work includes but is not limited to the following items: Installation of new curb, gutter, and sidewalk; Installation of full depth pavement, Pavement resurfacing; Installation of utilities; Installation of flexible pavement; Installation of street light poles; Installation of traffic signals; Installation of signing and pavement markings; Installation of electrical duct bank; Relocation of over-height detection system; Installation of wireless vehicle detection system; Installation of landscape improvements; Installation of erosion and sediment control; Implementation of transportation management plan; Mobilization and demobilization, provision and maintenance of work and storage areas, Engineer's field facilities and performance of employee training; Removal and disposal of any material as a result of the activities listed above, unless stated otherwise in the contract drawings.

This project is 83.15% Federally Funded and 16.85% District-Funded. DDOT selected Capitol Paving of DC, Inc. (CPDC) as the contractor and awarded the \$12,055,691.00 contract on January 9, 2019. DDOT issued notice to proceed with contract work to CPDC with work to begin on 05/13/2019 and a substantial completion date of 11/23/2020.

## 2. STATUS OF CONSTRUCTION / PROGRESS SUMMARY

The following were some of the work items performed during this reporting week period.

- Constructed 17.84 CY of PCC Base at NJ Ave. & 2<sup>nd</sup> St. Intersection, between MH-14 & MH-13.
- Constructed 4.66 CY of PCC Base at New Jersey Ave. & Pierce St. between CB-N1 & MH-4.
- Installed 13 LF of 15" RC Pipe at M St. & New York Ave. NW for CB-G.
- Performed 63 LF of 1' wide brick gutter at N St., New Jersey Ave. & 3<sup>rd</sup> St, near Island.
- Installed 23 LF of 15" RCP at SW corner of 3<sup>rd</sup> & M St. NW.
- Performed two (2) Test pit at NJ Ave. & 3<sup>rd</sup> St. & M St. NW.
- Performed 72.87 CY of common excavation at the island near NJ & M & 3<sup>rd</sup> St. intersection.
- Performed 46.22 CY of Hard surface pavement excavation at the location mentioned above.
- Furnished and set 57.5 LF of granite curb straight at the island near NJ & M & 3<sup>rd</sup> St. intersection.
- Constructed 162.24 SY of Brick sidewalk at NJ Ave., 3<sup>rd</sup> and N St. NW. (Around the island).
- Used 17.85 CY of Aggregate Base Course at the location mentioned above.
- Furnish and installed 133 LF of 1-2" PVC conduit at NJ Ave. & 3<sup>rd</sup> St. & M St. (near Island).
- Construed 39.44 SY of Sidewalk at West side of New Jersey Ave. NW & Pierce St. NW.
- Performed 98.55 SY of Sodding at West side of New Jersey Ave. between K & L St. NW.
- Performed 220.08 SY of Sodding at East side of New Jersey Ave. I & K St. NW.
- Performed 7 CY of PCC Base 2<sup>nd</sup> St. between H & I St. NW.
- Used 4.22 CY of GAB at the location mentioned above.
- Performed 52.44 SY of sodding at NJ Ave. NW between I & K St. NW.
- Constructed one (1) Street light Foundation at NJ & NY Ave. NW.
- Performed 73 LF of Brick gutter at New Jersey Ave., M St. & 3<sup>rd</sup> St. Intersection near/around the island.



### 3. PHOTOS OF WORK PERFORMED THIS PERIOD

*Picture No. 1*



02/17/2020- Brick Sidewalk Construction at East side of New Jersey Ave. NW between Morgan & N St. (SE view)

*Picture No. 2*



02/17/2020- Top soil placement for sodding base at East side of NJ Ave. b/n K & I St. NW (North view)



*Picture No. 3*



02/18/2020 – Conduit installation at west side of NJ Ave. NW. b/n M & Morgan St. NW (North view)

*Picture No. 4*



02/19/2020- Temp Asphalt Placement/compaction for over utility trench at 2<sup>nd</sup> St. NW b/n H & I St. NW.



*Picture No. 5*



02/19/2020- PCC Base Construction for Block sidewalk at West side of NJ & Pierce St. (NW. view)  
*Picture No. 6*



02/20/2020- Sodding activity at West side of New Jersey Ave. NW between K & L St. NW. (South view)



*Picture No. 7*



02/20/2020- PCC Base construction at 3<sup>rd</sup> St./ M St. and NJ ave. Intersection. (Southwest View)

*Picture No. 8*



02/21/2020- Single Catch Basin installation at SW corner of M St and 3<sup>rd</sup> St. (NE View)



Picture No. 9



02/21/2020- Preparation for GAB at West side of NJ Ave NW b/n Morgan & M St. NW. (North View)



02/21/2020- GAB placement and compaction at West side of NJ b/n M & Morgan St. NW. (South View)