

SAFETY IMPROVEMENTS ON NEW JERSEY AVENUE NW
DC CONTRACT NO. DCKA-2018-C-0017
FAP No.: CM-2017(042)

CONSTRUCTION MANAGER'S
WEEKLY PROGRESS REPORT 53

05/10/2020 – 05/16/2020

Project Website: www.newjerseyaverehab.com



05/12/2020 – Placement and compacting of 25mm base asphalt at NY Ave near Kirby St NW (East View)

1. EXECUTIVE SUMMARY

Project Description:

Work under this contract consists of safety/streetscape improvements along New Jersey Avenue, NW from N Street NW to H Street NW and the reconstruction New York Avenue, NW from First Street NW to 4th Street NW. The work includes but is not limited to the following items: Installation of new curb, gutter, and sidewalk; Installation of full depth pavement, Pavement resurfacing; Installation of utilities; Installation of flexible pavement; Installation of street light poles; Installation of traffic signals; Installation of signing and pavement markings; Installation of electrical duct bank; Relocation of over-height detection system; Installation of wireless vehicle detection system; Installation of landscape improvements; Installation of erosion and sediment control; Implementation of transportation management plan; Mobilization and demobilization, provision and maintenance of work and storage areas, Engineer's field facilities and performance of employee training; Removal and disposal of any material as a result of the activities listed above, unless stated otherwise in the contract drawings.

This project is 83.15% Federally Funded and 16.85% District-Funded. DDOT selected Capitol Paving of DC, Inc. (CPDC) as the contractor and awarded the \$12,055,691.00 contract on January 9, 2019. DDOT issued notice to proceed with contract work to CPDC with work to begin on 05/13/2019 and a substantial completion date of 11/23/2020.

2. STATUS OF CONSTRUCTION / PROGRESS SUMMARY

Work this week was performed during the day on Monday May 11, 2020 thru Saturday May 16, 2020. Please see the details below.

NY Ave between First St and 4th St

- Performed 35.97 CY of hard surface excavation at NW corner of NY Ave. and 1st St.
- Performed 14.53 CY of common excavation at NW corner of NY Ave. and 1st St.
- Installed 96.26 SY of TX7 Geogrid at this location, and placed and compacted 26.6 CY of aggregate base course between at NW corner of NY Ave. and 1st St.
- Placed 2.07 CY of PCC base at NW corner of NY Ave. and 1st St.
- Adjusted Sewer-Water-Utility Manhole Frame- 2 EACH at NW corner of NY Ave. and 1st St.
- Placed 109 LF brick gutter at NW corner of NY Ave. and 1st St.
- Installed 45 LF PCC Mountable Curb, 10 to 13 Inch Depth at NW corner of NY Ave. and 1st St.
- Placed 48 LF Portable Precast PCC Barrier at NW corner of NY Ave. and 1st St.
- Removed 9 LF Abandoned Streetcar Track NE corner of NJ Ave. and NY Ave.
- Performed 2.11 CY of common excavation at 1st and NY Ave station 308+25.
- Placed and compacted 862.69 Ton Asphalt Base Course, 25 mm at NY Ave, 1st. St. to 3rd. St NW station 308+00 to 317+25. Compacted the asphalt with steel rollers.
- Removed 10 SF existing ground mounted signs during excavation at NW corner of NY Ave. and 3rd St.
- Reset two water meter at NY Ave. between 3rd St. and 4th St.
- Removed a tree which was in the perimeter of the new roadway at NY Ave. between 3rd St. and 4th St.
- Prepared subgrade and performed proof roll from station 317+00 and station 317+12. DDOT Technician was on the site to check the proof roll.
- Placed 2,892.45 SY of Tack Coat on surface at NY Ave, 1st. St. to 3rd. St NW station 308+00 to 317+00.
- Placed and compacted 268.04 Ton Asphalt Surface Course, 12.5 mm at NY Ave, 1st. St. to 3rd. St NW station 308+00 to 317+25. Compacted the asphalt with steel rollers
- Prepared subgrade and performed proof roll on NY Ave. between 3rd St. and 4th St. from station 317+60 to 320+39 NB.
- DDOT Technician was on the site to check the proof roll.



- Removed a 2' X 2' abandoned telecommunication pull box during excavation at NY Ave. between 3rd St. and 4th St.
- Performed 324 LF Painted Lane Marking, 4 Inch at NY Ave. at NJ Ave., M St., and 3rd St.
- Removed 46.77 SF Lane Markings at NY Ave. at NJ Ave., M St., and 3rd St.
- Installed 10.25 LF PCC Mountable Curb, 10 to 13 Inch Depth at NW corner of NY Ave. and 1st St. NB.
- Moved 120 LF Portable Precast PCC Barrier at NY Ave. at NJ Ave., M St., and 3rd St.
- Placed 8.72 Ton Temporary AC, HMA Surface Course, 12.5 mm at NY/NJ Ave. intersection and M St. and Kirby St. half of NY Ave.
- Performed 232.52 CY of hard surface excavation from station 317+25 to 320+39.
- Performed 144.12 CY of common excavation from station 317+25 to 320+39.
- Installed 645.33 SY of TX7 Geogrid at this location, and placed and compacted 169.94 CY of aggregate base course from station 317+25 to 320+39.
- Prepared subgrade and performed proof roll at NY Ave. between 3rd St. and 4th St. NB.
- DDOT Technician was on the site to check the proof roll.
- Poured concrete for PCC base for block paver at NY Ave and Kirby St. NW
- Furnished and installed 15 LF of Ductile Iron Pipe, 6 Inch at NY Ave and Kirby St. NW
- Furnished and installed 150 LBS-Extra Fitting, Contractor Furnished at NY Ave and Kirby St. NW
- Performed 35.26 CY Trench Excavation and Backfill at NY Ave and Kirby St. NW
- Installed 1 EACH-PCC In-Line Trust Block at NY Ave and Kirby St. NW
- Performed 31.26 CY Borrow Trench Backfill at NY Ave and Kirby St. NW

1st and NY Ave NE side

- Finished & Installed 2 Each Galvanized Steel Transformer Base at 1st and NY Ave NE side.
- Installed decorative arms on streetlight poles at various locations on New Jersey Ave.

Intersection of NY Ave., NJ Ave. and M St.

- Furnished & Installed 28.5 Ft Tall Pendant Post St. Light Pole – 5 Each
- Furnished & Installed 20-Foot-Tall Steel Traffic Signal Pole – 6 Each
- Furnished & Installed 200-Watt Teardrop LED Fixture complete with photocell 4 Each

3. PHOTOS OF WORK PERFORMED THIS PERIOD



Picture No. 1: 05/11/2020 – Coping wall concrete pour underway at the NW corner of NY Ave. and 1st. St. (North View)



Picture No. 2: 05/11/2020 – Compaction and rolling of the subbase layer underway at NY Ave. between NJ Ave. and 3rd St. NB. (West View)



Picture No. 3 - 05/11/2020 – Installation of streetlight decorative arm at NJ Ave between I St. and K St. NW (North View)



Picture No. 4 – 05/12/2020 – Full depth excavation underway at NY Ave. between 3rd St. and 4th St. NB. (West View)



Picture No. 5 – 05/12/2020 – Placing and compacting first lift of 25mm base asphalt at NY Ave between First St and Kirby St (West View)



Picture No. 6 – 05/12/2020 – Second lift of 25mm base asphalt paving continued at intersection NY Ave. and M St. (East view)



Picture No. 7 – 05/12/2020 – Random core samples collected at NW corner of NY Ave NW and NJ Ave NW (South View)



Picture No. 8 – 05/13/2020 – Full depth excavation and section of undercut performed at NY Ave. between 3rd St. and 4th St. (East view)



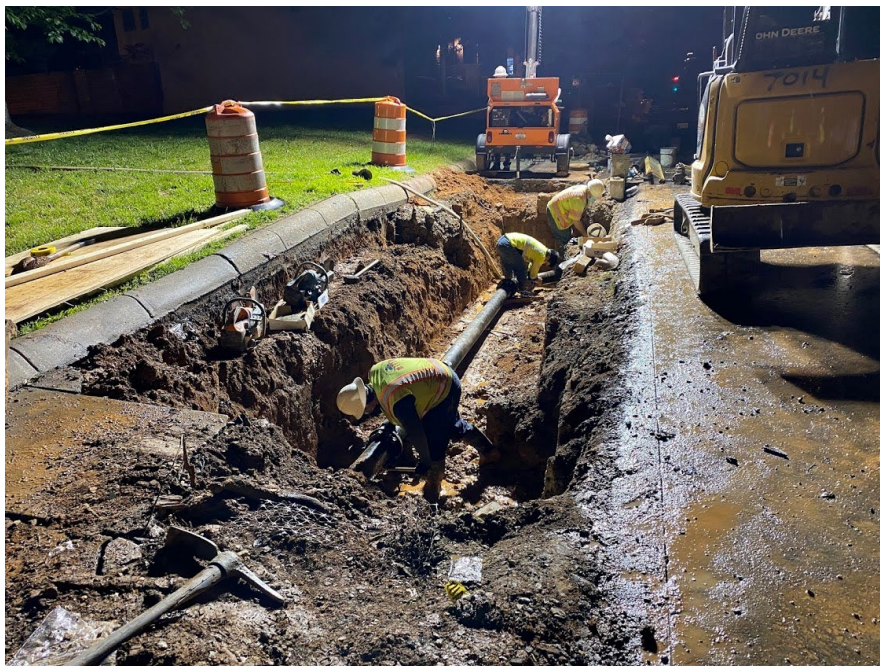
Picture No. 9 – 05/13/2020 – Placement of 12.5mm surface asphalt at intersection NY Ave. between NJ Ave NW and 3rd St (South View)



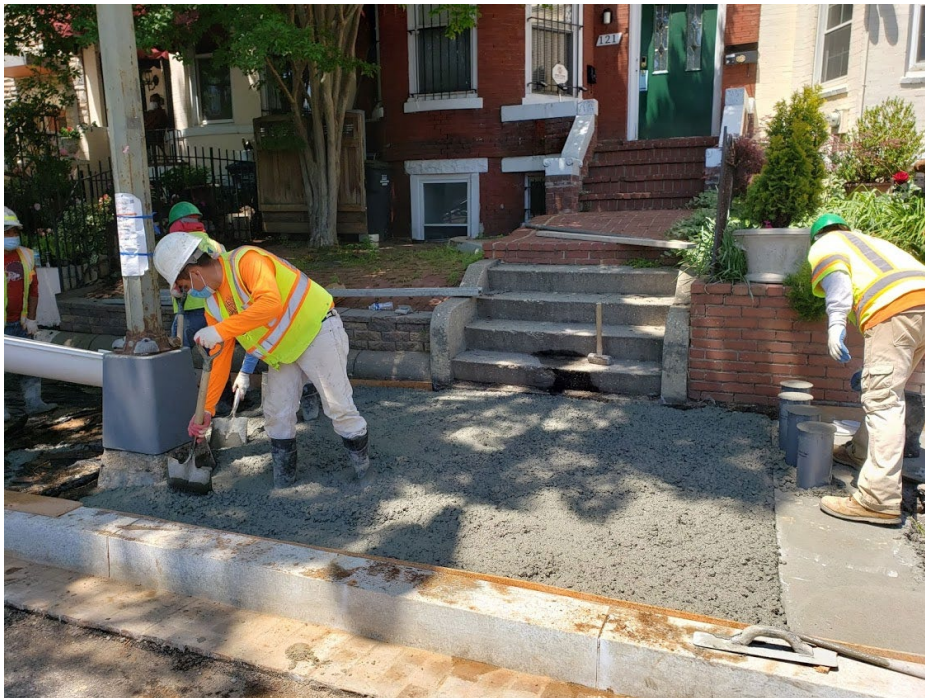
Picture No. 10 – 05/13/2020 – Proof rolling and probing performed by DDOT technician at NY Ave. between 3rd St. and 4th St. NB. (West View)



Picture No. 11 – 05/14/2020 – Concrete pour for PCC base of block sidewalk at NY Ave. between 1st St. and Kirby St. NB. (East View)



Picture No. 12 – 05/14/2020 – Night work, 6" Ductile iron waterline relocated at NY Ave and Kirby St. NW (East View)



Picture No. 13 – 05/15/2020 – Pouring concrete for PCC base for block paver near 121 NY Ave (North View)



Picture No. 14 – 05/15/2020 – Proof rolling and probing performed by DDOT technician at NY Ave. between 3rd St. and 4th St. NB. (West View)