

SAFETY IMPROVEMENTS ON NEW JERSEY AVENUE NW

DC CONTRACT NO. DCKA-2018-C-0017

FAP No.: CM-2017(042)

CONSTRUCTION MANAGER'S WEEKLY PROGRESS REPORT 22

10/06/2019 – 10/12/2019

Project Website: www.newjerseyaverehab.com



10/11/2019 – Flexi-pave construction for sidewalk near tree roots at East side of NJ Ave. Sta. 115+00

1. EXECUTIVE SUMMARY

Project Description:

Work under this contract consists of safety/streetscape improvements along New Jersey Avenue, NW from N Street NW to H Street NW and the reconstruction New York Avenue, NW from First Street NW to 4th Street NW. The work includes but is not limited to the following items: Installation of new curb, gutter, and sidewalk; Installation of full depth pavement, Pavement resurfacing; Installation of utilities; Installation of flexible pavement; Installation of street light poles; Installation of traffic signals; Installation of signing and pavement markings; Installation of electrical duct bank; Relocation of over-height detection system; Installation of wireless vehicle detection system; Installation of landscape improvements; Installation of erosion and sediment control; Implementation of transportation management plan; Mobilization and demobilization, provision and maintenance of work and storage areas, Engineer's field facilities and performance of employee training; Removal and disposal of any material as a result of the activities listed above, unless stated otherwise in the contract drawings.

This project is 83.15% Federally Funded and 16.85% District-Funded. DDOT selected Capitol Paving of DC, Inc. (CPDC) as the contractor and awarded the \$12,055,691.00 contract on January 9, 2019. DDOT issued notice to proceed with contract work to CPDC with work to begin on 05/13/2019 and a substantial completion date of 11/23/2020.

2. STATUS OF CONSTRUCTION / PROGRESS SUMMARY

The following were some of the work items performed during this reporting week period.

- Replaced 118 LF of water service line at 3rd St. NW between Morgan St. and N St. for Block 1223 and 1229.
- Installed 14 LF of 18" Basin connect PCC pipe at NE corner of NJ Ave. and Pierce St.
- Furnished and installed one (1) Standard Double Basin at NE corner of NJ Ave. and M St. (Structure# F1)
- Furnished and installed 40 LF of 4-inch PVC Encased Electrical conduits at NB of NJ Ave. & 4th St. NW.
- Removed nine (9) LF of abandoned railroad for traffic signal conduit at 4th and NY Ave. NW.
- Installed two (2) curb stops for house No. 1223 and 1229.
- Installed 16 LF of 18" Basin Connect PCC Pipe, Class III from existing manhole to new MH-MH3 at NE Corner of Pierce and NJ Ave. NW.
- Installed 40 LF of 18" Basin connect PCC Pipe, Class III between existing MH F2 to MH F4 at NJ Ave. towards Morgan St. Approximately from Sta. 104+60 to Sta. 105+00.
- Performed 22.78 SY of Block Sidewalk on PCC Base at East side of NJ Ave. NW between Sta. 114+65 & 114+85.
- Furnished and installed one (1) Standard Triple Basin V1.
- Installed 10 VLF of 48" and less Sewer Manhole, MH-MH2.
- Performed 121.33 SY of Block Sidewalk on PCC Base at the refereed location above.

3. PHOTOS OF WORK PERFORMED THIS PERIOD

Picture No. 1



10/07/2019- Excavation for Structure M3 installation at NE corner of NJ & Pierce St. NW (North View)

Picture No. 2



10/07/2019- Excavation for curb & gutter at East side of NJ Ave. btwn L & Pierce St NW. (North View)

Picture No. 3



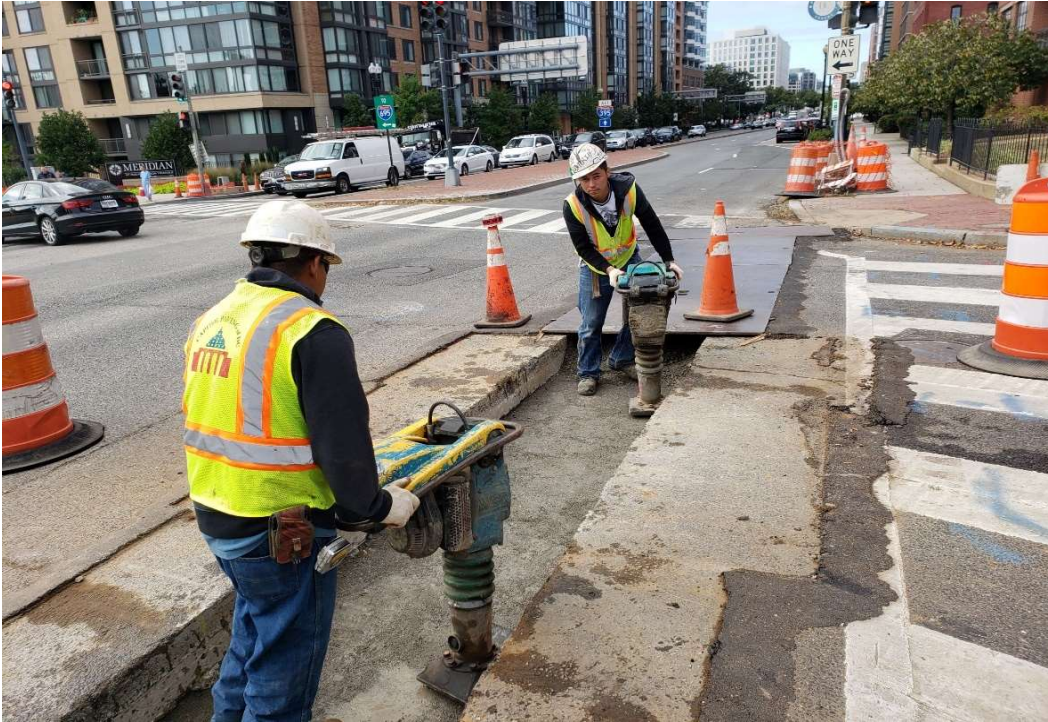
10/08/2019- Installing Block Paver for Sidewalk at NE corner of NJ & K St. NW. (Southeast View)

Picture No. 4



10/09/2019-Concrete pouring PCC base for utility conduits at north side NY Ave & 4th St. NW. (SE View)

Picture No. 5



10/09/2019 – Compaction to the GAB backfill for conduits at 4th St. & NY Ave. NW. (West View)

Picture No. 6



10/10/2019 – Installed 18" RC storm water pipe from str. F4 to F2, b/n M and Morgan St. NW (North view)

Picture No. 7



10/10/2019- Installing Block pavers for sidewalk at East side of NJ Ave. btwn K & L St. NW (Southview)

Picture No. 8



10/10/2019- MOT Signs set up at west side of NJ between Pierce St. and New York Ave. (North view)

Picture No. 9



10/11/2019- Layout/Form working for Wheelchair Ramp at NE Corner of NJ & L St. NW (NW view)

Picture No. 10



10/11/2019- Installed Granite Curb at East side of NJ Ave. NW between L & Pierce St. NW. (North View)